



BETTER DENTISTRY WORLDWIDE

A-dec began with a **simple** idea:
make the best **better.**

Ken Austin
Founder & Co-owner A-dec



A-dec is **recognized** among the world's top
dental-equipment **innovators.**

Thomas J. Giacobbi, DDS, FAGD
Editorial Director, Dentaltown Magazine



Community

A-dec is a company born from family and born to lead. Ever since founders Ken and Joan Austin set out to make the best better, every A-dec patient chair, stool, delivery system, dental light, and cabinet have been part of a continuous story of quality through caring, one solution at a time.

Our headquarters is in Newberg, Oregon, but our presence around the world puts us wherever you need us to be. From a campus of 50 acres, A-dec produces more dental chairs, delivery systems, and lights than any manufacturer in the world. And doing so without a single compromise to thoughtful design, lasting integrity, and a commitment to simplify the lives of dentists.

No one takes **care** of customers like A-dec.

It's what makes A-dec ***A-dec***.

Diaa Khreish
Tamer Levant, Iraq

Reliability

What's most reliable is the least complicated. It's one of the reasons why A-dec product development teams keep an ongoing dialog with dental professionals. Only through asking and sharing and listening are we able to help simplify how dental teams perform at their very best.



A-dec creates **solutions** that work,
and work **consistently.**

Joseph D'Angelo, DDS
LaJolla, California



Innovation

Consider one of A-dec's prized innovations: *the control block*. At the heart of every A-dec delivery system is the industry's most reliable engineering breakthrough, which begins with solid corrosion-resistant alloys to withstand years of constant use. The material is precisely machined with a proven configuration that requires very few parts. It's designed with quick-connect fittings, and a flow-through water system that delivers trouble-free performance to the entire unit. Built to last? Yes. Simple? *Very*. Why? Because the people of A-dec are on a continuous mission to build the best better.

Our **role**
is to get it **right.**

Scott Parrish
President, A-dec

Accountable

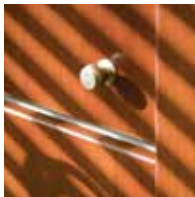
Every detail matters. While many things in theory may be relative, our commitment to quality is absolute. In order to provide the most durable and reliable dental equipment in the world, A-dec makes sure that nearly everything that goes into A-dec solutions is manufactured by A-dec people. And by forming specialized work stations where a single individual performs an entire job, we're assuring that quality begins and ends with a person, not a department. The outcome is a better product. Not only do the people of A-dec see and experience an unmistakable pride of ownership, but they're also staking their effort on a product that performs exactly how it's been engineered to perform. *Every time.* It's why A-dec continues to set standards for outstanding dependability.



A-dec

listens.

Roland Bryant, MDS, Ph.D.
Professor, University of Sydney, Australia

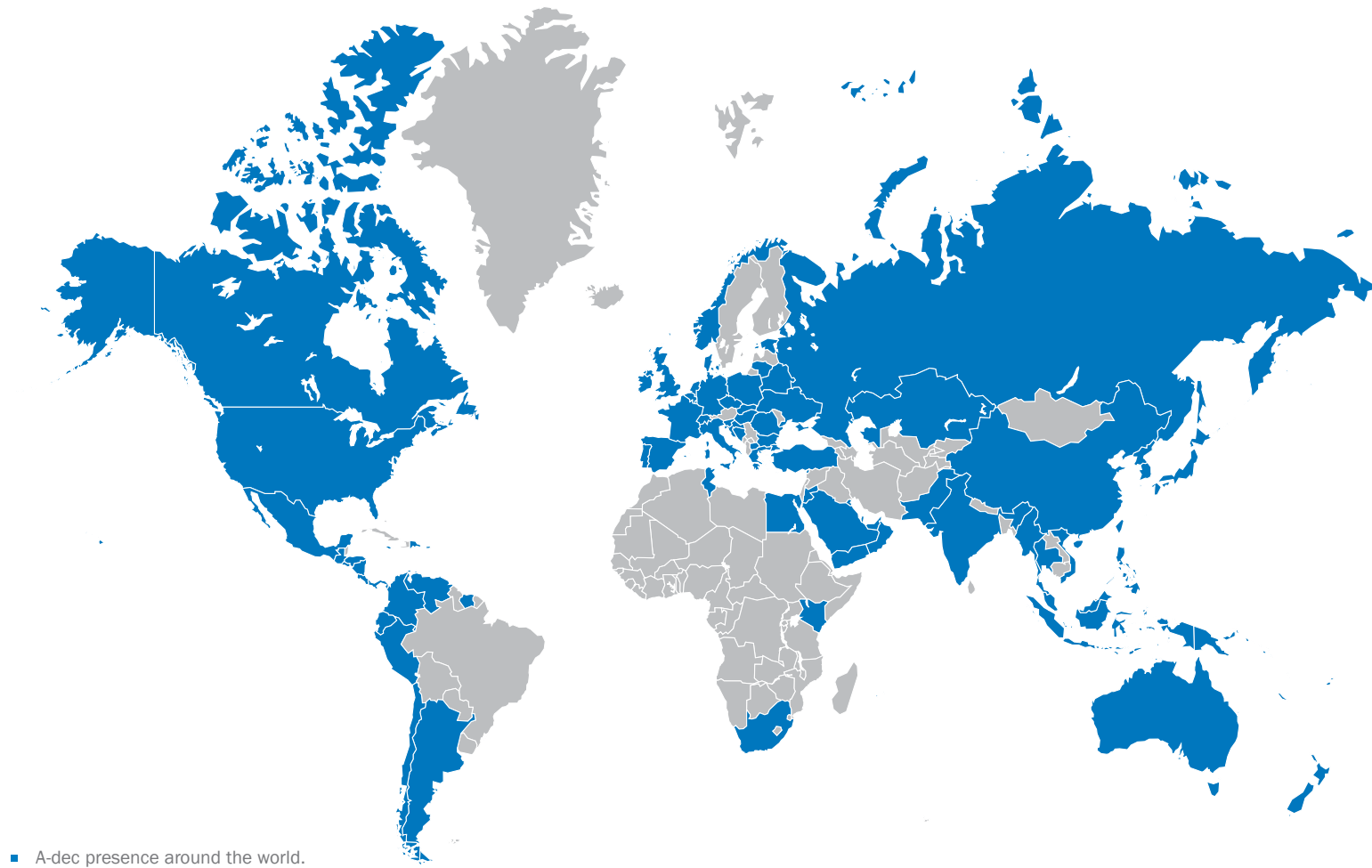


Global

A-dec offers a lifetime of support for our products. You might say it's a calling. *Have a question about what to look for in a chair? Want the most efficient use of space?* No matter how modest or grand the request, there's an A-dec authorized specialist eager to learn more—and do more—before, during and long after installation of an A-dec solution.

A-dec is wherever you need us to be. Aside from our U.S. headquarters, A-dec has locations in the United Kingdom, Australia, and China to serve a network of authorized dealers across more than 100 countries worldwide. As a result, a dentist in the middle of Cairo is assured the same quality and personal attention as a dentist outside Chicago. *Why?* It's simple. We're A-dec.

Responsive. Accessible. Informed. We're wherever you need us to be.



When it comes to **efficiency**,
safety and ease,
the whole **world** looks
to see what A-dec is doing.

Alexey Chernyshov
President, Dentex, Moscow, Russia

Higher Education, Government & Institutions of Learning. They researched. They carefully considered. Their choice? A-dec.

Argentina

Gendarmería Nacional
Hospital Municipal
Universidad de Buenos Aires
Universidad de la Plata

Australia

Aboriginal Medical Service of Northern Territory
Australian Capital Territory Health
Adelaide Dental Hospital
Australian Defense Forces
Brisbane Dental Hospital
Centre for Rural & Remote Oral Health Care of Western Australia
Curtin University Hygiene School
Dental Health Services of Queensland (School Dental)
Dental Health Services of Western Australia
Dental Health Services of Victoria
Department of Health and Human Services of Tasmania
Gilles Plains TAFE College of South Australia
Griffith University
Latrobe University
Melbourne University Dental School
New England Health Department of New South Wales
Northern Territory Dental Health Department
New South Wales Health Service
Queensland Health
Regional Health Service of New South Wales
Royal Dental Hospital
Royal Flying Doctor Service of the Northern Territory
School Dental Services of Victoria
South Australian Dental Service
Sydney Dental Hospital
Sydney University
University of Western Australia
West mead Dental School
Western Australia TAFE College for Dental Technicians and Dental Assistants
Western Australian University Centre for Rural & Remote Oral Health Care
Yeronga Dental Therapist School

Bahrain

Ministry of Health

Belarus

Belarus Medical Academy of Postgraduate Education
Belarus State Medical University

Belgium

Algemeen Ziekenhuis St. Jan
Katholieke Universiteit Lueven
Rijksuniversiteit Gent
Shape Army Health Clinic - U.S. Army Medical Department
Universitair Ziekenhuis Gent
Vrije Universiteit Brussel

Bosnia

Sarajevo School of Dentistry

Bulgaria

Medical University in Plovdiv

Canada

Dalhousie University
Laval University
McGill University
University of Alberta
University of British Columbia

University of Manitoba
University of Montreal
University of Saskatchewan
University of Toronto
Western University of Western Canada

Chile

Banmédica – Clínica Davila (Temuco, Concepcion)
Universidad de Antofagasta
Universidad Del Desarrollo
Universidad Diego Portales
Universidad Finis Terrae
Universidad Mayor

China

Anhui Medical University
Capital Medical University
China Medical University
Chongqing Medical University
Dalian Medical University
Fujian Medical University
Fudan University
Guangxi Medical University
Harbin Medical University
Henan University
Jinan University
Kunming Medical University
Luzhou Medical College
Nanchang University
Nanjing Medical University
Nantong University
North Sichuan Medical College
Peking University
Second Military Medical College
Shangdong University
Shanghai Jiao Tong University
Sichuan University
Soochow University
Southern Medical University
Sun Yat-Sen University
Tang Siu Kin Dental Therapists Training School
Tianjin Medical University
Tongji University
Wenzhou Medical College
Wuhan University
Xinjiang Medical University

Colombia

Caja de Compensación – Colsubsidio
Ecopetrol
Fundación Universitaria Autónoma de las Américas
Pontificia Universidad Javeriana
Santo Tomas University
Universidad CES
Universidad Javeriana
Zimplant

Cook Islands

Ministry of Health

Costa Rica

Caja Costarricense S.S.
Universidad de Costa Rica
Universidad Latina
Universidad Veritas

Croatia

University of Croatia Zagreb

Cyprus

Department of Health

Czech Republic

Charles University, Hradec Kralove
Charles University, Pilsen
Charles University, Prague
Children Hospital Motol Prague
City Clinic of Prague
Faculty Hospital Královské Vinohrady, Prague
Military Hospital, Olomouc
Military Hospital, Pilsen
Ministry of Defense, Czech Republic
Regional Hospital in Cerslbud
Trauma Hospital in Brno

Denmark

EUC Syd, Aabenraa
Dental College, Aalborg
Hemingsholm Erhvervsskole, Herning

Dominican Republic

San Pedro de Macoris
Universidad Católica Madre y Maestra
Universidad Central del Este
Universidad Nac. Pedro Henriquez Urena

Ecuador

Banco Central, Guayaquil
Banco Central, Quito
Banco del Desarrollo
Colegio Nacional Mejía
Contraloría General del Estado
Corporación Financiera Nacional
Dinader
Dirección Nacional de Migración
Hospital del Corazón, Quito
Hospital de Salcedo
Hospital Geriátrico
Inst. Nacional del Niño y la Flia., Guayaquil
Inst. Nacional del Niño y la Flia., Portoviejo
Maternidad Isidro Ayora
JDLA University
USFQ University
Universidad Católica

Egypt

Ain Shams University
Cairo University
Egyptian Dental Services

El Salvador

Antel – Cía.
Universidad Nacional
Universidad Nacional de El Salvador

England

Barts & Royal London Dental School
Birmingham Dental Hospital & School of Dentistry
Bradford General Hospital
Bristol University
Bristol Dental Hospital & School of Dentistry
Crewe Post Graduate Centre
Eastman Dental Hospital
Eastman Dental Institute of Continued Professional Development
Essex Post Graduate Centre – Southend
Guys & St Thomas Dental School
Hull Royal Infirmary
John Radcliffe Hospital Post Graduate Centre
Kings College Dental Hospital
Kingsmill Hospital Nottingham
Leeds Dental Institute
Liverpool Dental Hospital & School of Dentistry
LonDEC – London Dental Education Centre
Manchester Dental Hospital & School of Dentistry – John Turner Dental Hospital

Milton Keynes General Hospital
Newcastle Dental Hospital & School of Dentistry
Northern Deanery Dental Post Graduate Centre - Bourne House Durham
Oldbury Health Centre
Peninsula Dental School - Heavitree Dental Education Centre
Peninsula Dental School - Devonport Dental Education Centre
Peninsula Dental School - Derriford Dental Education Centre
Peninsula Dental School - Truro Dental Education Centre
Portsmouth School of Hygiene
Salford Post Graduate Centre
St Georges Hospital
Sheffield Dental Hospital & School of Dentistry - Charles Clifford Dental Hospital
Sussex Post Graduate Centre - Brighton
University of Central Lancashire (Preston Campus)

Fiji

Fiji Dental Health

France

City Dental Office Nice
CPAM City Paris
Dental Hospital Paris Salpêtrière
Dental School Paris Tour Auvergne
Policlinic Creil
Post Dental Office Paris
University of Clermont – Ferrand
University of Lille 2
University of Marseilles
University of Nancy
University of Nice
University of Paris, Deliberes
University of Paris, Garanciere
University of Reims
University of Toulouse

Germany

Air Force, Germany (U.S. Military)
Army, Germany (U.S. Military)

Greece

401 Army Hospital
Athens University Dental School
Red Cross Hospital

Guam

Air Force, Guam (U.S. Military)
Navy, Guam (U.S. Military)

Guatemala

Universidad Francisco Marroquín
Universidad San Carlos

Honduras

Programa De Las Naciones Unidas Para El Desarrollo, PNUD
Universidad Nacional de Honduras

Hungary

Faculty of Dentistry Pécs
Simmelweis University Budapest
University of Szeged
University of Debrecen

India

AB Shetty Dental School
Ambedkar Dental College
KLE Society Dental School
Maulana Azad Dental College
VS Dental College

Indonesia

Bango Medical Center, Jakarta
Dentistry Institute of Navy R.E Martadinata, Jakarta
Department of Transportation - Flight Health Center, Jakarta
Gadjah Mada University, Yogyakarta
Gandaria Health Center, Jakarta
General Hospital of Ir. Soekarno, Bangka Belitung
General Hospital of Bekasi
General Hospital of Blambangan, Banyuwangi
General Hospital of H. Abdul Marabahan, Banjarmasin
General Hospital of Otak Nasional, Jakarta
General Hospital of Tidar, Magelang
Hasanuddin University, Makasar
Health Departement of Kediri
Health Department of DKI Jakarta
Health Department of North Jakarta
Health Department of South Jakarta
Infeksi Tropik Hospital, Surabaya
Kohanunas, Jakarta
MH Thamrin Hospital, Jakarta
Mitra Keluarga Cibubur Hospital, Jakarta
Paru Hospital, Cirebon
Permata Pamulang Hospital, Tangerang
Prima University, Medan
Soedirman University, Purwokerto
Stikes Prima, Jambi
Sumatera Utara University, Medan

Italy

NATO Base of Aviano (U.S. Air Force)
NATO Base of Napoli (U.S. Navy)
NATO Base of Sigonella (U.S. Navy)
University of Bologna
University of Cagliari
University of Paris, Deliberes
University of Napoli
University of Parma

Jamaica

UWI University

Japan

Army
Air Force
Matsumoto Dental University
Navy
Niigata University
Showa University
Tokyo Medical Dental University
Tokyo Metropolitan Police Hospital

Jordan

Jordan University of Science and Technology

Kazakhstan

Asfendiarov Kazakh National Medical University
Astana Medical University
Semipalatinsk Medical University

Korea

Air Force, Korea (U.S. Military)
Army, Korea (U.S. Military)
Chosun University
Ewha Women's University
Korea National University
Kyungpook National University
Sun Moon University
Wonkwang University
Yonsei University

Kuwait

Kuwait University of Allied Sciences
Ministry of Health
Rumythia Training Center

Lebanon

Beirut University
St. Joseph University

Lithuania

Kaunas University, Kaunas

Macedonia

University Dental Clinics in Skopje

Malaysia

Alliance University
Mahsa College
Malaysian Armed Forces
National Dental Health Centre
Penang Dental Training College
Universiti Sains Islam Malaysia
Universiti Teknologi Mara
University Kebangsaan Malaysia
University Malaya
Universiti Sains Malaysia
Segi University College

Mexico

3M Centro de Innovación
Banjercito
Centro de Núcleo Avanzado
Centro Hospitalario del Estado Mayor
Presidencial, CEMP
Clínica de Especialidades Odontológicas
"Honorato Villacosta"
Consejo de la Judicatura Federal
Delegación Benito Juárez
Departamento del Distrito Federal
Desarrollo Integral a la Familia
Enep Zaragoza
Escuela de Estudios Superiores Unidad León
Escuela Militar de Odontología
GNP – Grupo Nacional Provincial
Hospital General de México
Hospital Ignacio Zaragoza
Hospital Infantil de México Federico Gomez
Instituto de Salud de Chiapas
Instituto Franco Inglés
Instituto Mexicano del Seguro Social (IMSS)
Instituto Nacional de pediatría
Instituto Nacional de Perinatología
Instituto Politécnico Nacional
Instituto de Seguridad Social de los Trabajadores
del Estado (ISSTE)
Instituto de Seguridad Social del Estado de México
y Municipios (ISSEMYM)
Instituto Tecnológico y de Estudios Superiores de
Monterrey (ITESM)
Instituto Universitario del Estado de México
Petroleos Mexicanos (PEMEX)
Poder Judicial de la Federación
Presidencia de la Republica
Procuraduría General de la Republica
Secretaría de la Defensa Nacional
Secretaría de la Salud
Secretaría de Salud del Gobierno de Tabasco
Secretaría de Marina
Senado de la República
Servicios de Salud Pública del Distrito Federal
Servicios Médicos Asistenciales SEDENA
Universidad Anahuac
Universidad Autónoma Benito Juárez de Oaxaca
Universidad Autónoma de Aguascalientes
Universidad Autónoma de Baja California, Mexicali
Universidad Autónoma de Baja California, Tijuana
Universidad Autónoma de Baja California, Valle de
las Palmas
Universidad Autónoma de Coahuila
Universidad Autónoma de Guadalajara
Universidad Autónoma de Nuevo León
Universidad Autónoma de Querétaro
Universidad Autónoma de San Luis Potosí
Universidad de Sonora

Universidad Autónoma de Veracruz (Villarrica)
Universidad Autónoma de Yucatán
Universidad Autónoma de Zacatecas
Universidad Autónoma del Estado de México
Universidad de Guadalajara
Universidad del Valle de México, Hermosillo
Universidad del Valle de México, Querétaro
Universidad de Monterrey
Universidad Intercontinental
Universidad Autonoma de Ciudad Juárez
Universidad Juárez Autonoma de Tabasco
Universidad Latina de América (UNLA)
Universidad Nacional Autónoma de México
Universidad Tecnológica de México (UNITEC)
Universidad Veracruzana

Myanmar

University of Mandalay
Yangon University

Nairobi

Aga Khan University
Academic Center for Dentistry Amsterdam
Hogeschool Utrecht Faculteit Gezondheidszorg –
Opleiding Mondhygiëne
Hogeschool INHOLLAND – Opleiding
Mondzorgkunde

New Guinea

Papua New Guinea Health Dental Division

New Zealand

Auckland University of Technology
Oral Health Unit
Auckland Hospital Board
Canterbury District Health Board
Hawkes Bay District Health Board
The New Zealand Army Dental Corps
New Zealand Prison Service
Otago University
Southland District Health Board

Nicaragua

Hospital Metropolitano
Universidad Autónoma Americana
UNAN – Universidad Nacional Antónoma de
Nicaragua

Northern Ireland

Belfast School of Dentistry

Norway

Finnmark Fylkeskommune, Finnmark

Oman

Ministry of Defense
Ministry of Health

Pakistan

Aga Khan Hospital
Karachi Medical Dental College

Panama

Universidad Latina
Universidad Nacional

Peru

Universidad de Ica
UPC University

Philippines

University of the East
University of Centro Escolar

Poland

Warsaw Medical University
Lublin Medical University
Bialystok Medical University
Wroclaw Medical University
Szczecin Medical University
Katowice Medical University
Gdansk Medical University

Portugal

Faculdade de Medicina Dentaria de Lisboa
Faculdade de Medicina Dentaria de Oporto
Private Dental University, Lisbon
Private Dental University, Porto

Puerto Rico

Government Clinics
Universidad de Puerto Rico

Qatar

Ministry of Health

Republic of Ireland

University College Cork

Romania

Bucharest City Hall Hospitals
Dental School " Apollonia" Iasi
Dental School "Iuliu Hatieganu" Cluj Napoca
Dental University in Craiova
Surgery Hospital from Carol Davila University
Bucharest
University of Medicine and Pharmacy Targu Mures
University " OVIDIUS" Constanta

Russia

Bashkirian State Medical University
Belgorod Medical University
Central Research Institute of Dental and
Maxillofacial Surgery
Dagestan State Medical Academy
MEDI Postgraduate Education Center
Moscow State Medical-Dental University
Novosibirsk State Medical Academy
Omsk Medical Academy
Rostov State Medical University
Russian Medical Academy of Post Graduate
Education
Smolensk Medical Academy
Stavropol State Medical Academy
Tomsk State Medical Academy
Tver Medical Academy
Voronezh State Medical University
Yakutsk State Medical University

Samoa

Ministry of Health

Saudi Arabia

Aramco – Dental Services
Ministry of Defense

Scotland

Aberdeen Dental School
Aberdeen Dental Education Centre
Broxden Dental Education Centre
Dundee Dental Hospital & School of Dentistry
Dumfries Dental Centre
Glasgow Dental Hospital & School of Dentistry
Inverness Dental Centre - Raigmore Hospital
Western Isles Dental Centre Stornoway

Singapore

Alexandra Hospital
The Implant & Oral Surgery Centre
Jurong Medical Centre
Khoo Teck Puat Hospital
National University of Singapore
Tan Tock Seng Hospital
University of Warwick
(International Training Centre)

Slovakia

Dental Hygiene School in Presov

Slovenia

Ljubljana University
Narocnik Health Institution in Tolmin

South Africa

Medunsa University
Pretoria University
University of Western Cape
University of Witwatersrand

Spain

School of Stomatologi, Santiago de Compostela

Surinam

Youth Dental Center

Switzerland

University of Basel

Taiwan

Chung Shan Medical and Dental College
National Defense Medical Center
National Taiwan University

Thailand

Chiangmai University
Chulalongkorn University
Khon Kean University
Mahidol University
Rangsit University
Sirindhorn University – Chonburi
Sirindhorn University – Khon Kaen
Songkhla University
Srinakarin Wiroj University
Thammasat University

Trinidad & Tobago

Monit Hope Dental School

Tunisia

University of Tunisia

Turkey

Dicle University
Ege University
Erzurum Ataturk University
GATA, Ankara
Gaziantep State Hospital
Grand National Assembly of Turkey (TBMM)
Hacettepe University
Istanbul University
Konya Selcuk University
Marmara University
Ministry of Health
Samsun 19 Mayıs University
SSK Okmeydanı Hospital
SSK Topraklık
Trabzon University
Yeditepe University, Balmumcu
Yeditepe University, Goztepe

Ukraine

University of Kiev, Kiev

United Arab Emirates

Department of Health
Ministry of Defense

USA

Air Force
Army
Baylor College of Dentistry
Boston University
Case Western Reserve University
Coast Guard
Columbia University
Creighton University
Federal Bureau of Prisons
Georgia Regents University Augusta
Harvard University
Howard University
Indiana University
Job Corp
Loma Linda University
Louisiana State University

Marquette University
Medical College of Georgia
Medical University of South Carolina
Meharry Medical College
National Guard
Navy

New York University
Nova Southeastern University
Ohio State University
Oregon Health Science University
Roseman University of Health Sciences
Southern Illinois University
State University of New York – Buffalo
State University of NY – Stony Brook
Tufts University
University of Alabama
University of California Los Angeles
University of California San Francisco
University of Colorado
University of Connecticut
University of Detroit Mercy
University of Florida
University of Illinois
University of Iowa
University of Kentucky
University of Louisville
University of Medicine and Dentistry
of New Jersey, Rutgers

University of Michigan
University of Minnesota
University of Mississippi
University of Missouri – Kansas City
University of Nebraska

University of New England
University of North Carolina at Chapel Hill
University of Oklahoma
University of Pittsburgh
University of Southern California
University of Texas Houston
University of Texas San Antonio
University of the Pacific
University of Washington
U.S. Public Health Service
Veteran Administration Medical Centers
Virginia Commonwealth University
West Virginia University
Western University of Health Sciences

Venezuela

Hospital San Juan de Dios
Instituto de Las Fuerzas Armadas
Institute of Social Security and Social Assistance to
personnel of the Ministry of Education
IPASME
Seguro Social
Universidad Central de Venezuela
Universidad Mariscal de Ayacucho
Universidad Romulo Gallegos

Vietnam

Cantho University
Medical University of Hanoi
Odonto Stomatological HCMC

Wales

Cardiff Dental School
Glan Clwyd Hospital
Llandough Hospital
Port Talbot Resource Centre
Porth Dental Education Centre
Royal Gwent Hospital
Wrexham Medical Institute

Yemen

University of Science & Technology



A-dec Headquarters

2601 Crestview Drive
Newberg, Oregon 97132 USA
Tel: 1.800.547.1883 within USA/CAN
Tel: 1.503.538.7478 outside USA/CAN
Fax: 1.503.538.0276
a-dec.com

A-dec Australia

Tel: 1.800.225.010 within AUS
Tel: +61.(0)2.8332.4000 outside AUS

A-dec China

Tel: +1.503.538.7478

A-dec United Kingdom

Tel: 0800.233285 within UK
Tel: +44.(0).24.7635.0901 outside UK

A-dec, the A-dec logo, A-dec 500, A-dec 300, Cascade, Cascade Master Series, Century Plus, Continental, Decade, ICX, ICV, Performer, Preference, Preference Collection, Preference ICC, and Radius are trademarks of A-dec Inc. and are registered in the United States and other countries. A-dec 400, A-dec 200, Preference Slimline, and reliablecreativesolutions are also trademarks of A-dec Inc. None of the trademarks or trade names in this document may be reproduced, copied, or manipulated in any manner without the express, written approval of the trademark owner.

Certain touchpad symbols are proprietary to A-dec Inc. Any use of these symbols, in whole or in part, without the express written consent of A-dec Inc., is strictly prohibited.

The colors and products shown may vary from the actual materials and are subject to change without notice. Please see your authorized A-dec dealer for accurate color samples and the most current product information.